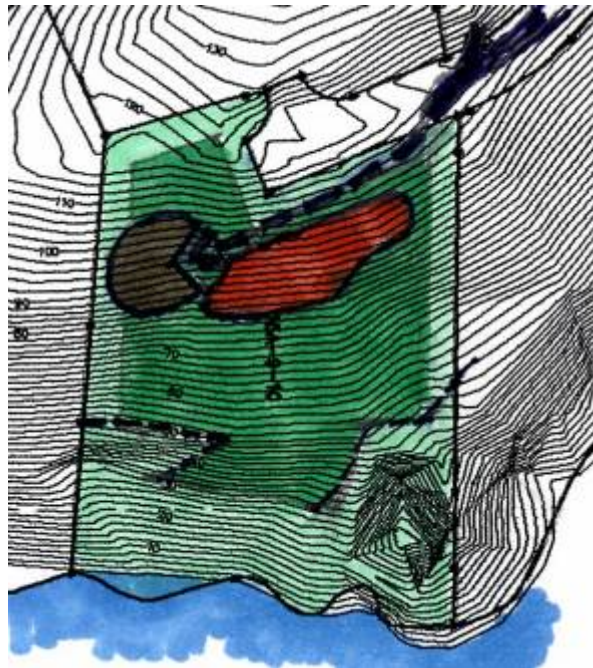


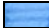






Ditleff Point

Rendezvous Bay, St. John, United States Virgin Island

Lot 15A-9-10

This lot is located at the end of a short cul-de-sac. The views face East over looking Fish Bay. The property gets steeper, the closer to the water with some cliffs cascading down to the waters edge. The ideal location for the parking and the home are between contours 80' and 100'. In order to reach the parking, the driveway starts at the 106' contour and angles down. Although, the shore line is rugged, it looks like it would be possible to obtain access to the waters edge. If an access pathway is constructed to the waters edge, it shall follow the natural contours. Rock outcroppings and foliage will be respected. Special attention shall be taken to protect the rock areas and shore line below from construction siltation.



-  The waters edge
-  Recommended parking location
-  Non-buildable area
-  Buildable area
-  Recommended home location
-  Recommended driveway access point
-  Cliff set-back