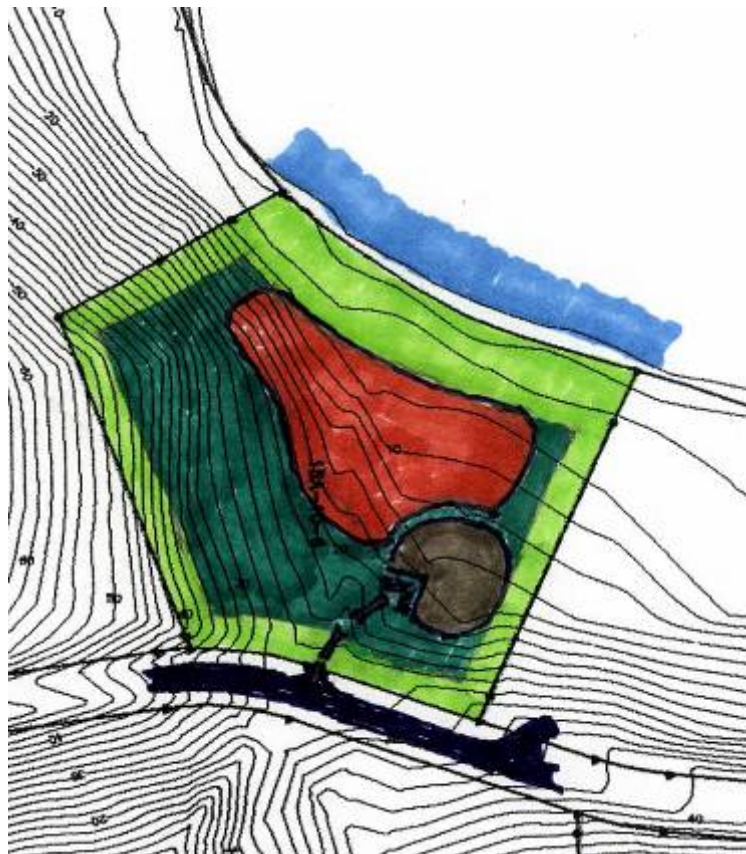








# Ditleff Point

Rendezvous Bay, St. John, United States Virgin Island

## Lot 15A-10-6

This lot is adjacent to the beach and faces Northwest. It is also next to the beach access easement on the North property line. The building area is directly adjacent to the beach. Access from the Estate Road should be at contour 29', sloping down to a parking area adjacent to the beach easement at approximately elevation 15'. The house could be located between contours 8' and 20'. Special care should be taken to protect the beach from siltation during construction. Landscape screening will be required between the beach access easement and the parking and between the beach and the house, in order to maintain as much privacy as possible.



-  The waters edge
-  Recommended parking location
-  Non-buildable area
-  Buildable area
-  Recommended home location
-  Recommended driveway access point

---- Cliff set-back